

Description:

Print To Default Printer (PTDP) is a utility to send any file to your default printer. If you are using a printer connect to a virtual port, i.e.: USB printers, you may not be able to use this program. If you can not normally send a file to the printer from the command line (copy /b filename.ext lpt1 where filename.ext is the file to be sent to the printer and lpt1 is the printer port), you will not be able to use this program.

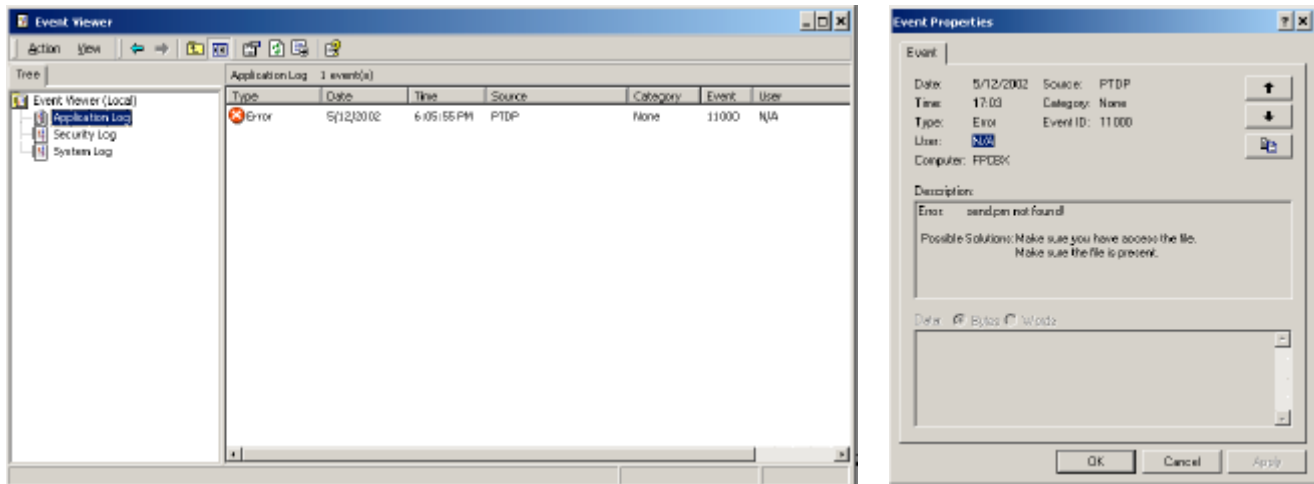
Usage:

PTDP filename.ext

Where: the filename.ext is the name of the file to be printed.
You can not use wildcards to print out multiple files at once.

Event logging

If you are running Microsoft Windows NT 3.51, 4.0, Windows 2000, or Windows XP, this program will use the event log. If there is an error, a message will be sent to both the Event Log and the user. There is one exception to this, if no file name is included in the execution of the program, only the user will see the message, it will not be logged to the Event Log. You may look at the errors by going to the application part of the Event Log. See Microsoft help for more information on using the Event Log.



System Errors will be located under System Log. These errors could be drive is not ready, or network is down.

Moving and Renaming the Program

This program is a utility, which means you might want to run it from any directory. This program will automatically update the system registry with the directory information of the program. This is necessary because of Windows uses the Event Logging works under Windows NT. This program standard program name is "PTDP.EXE"- Print to Default Printer.

Advance User:

This program may be renamed if PTDP is not descriptive enough for you, but I would not rename it to many times, because each time the program is renamed, a new entry will be made in the system registry.

User Security level

To set up the system registry information, user must have administrator's rights. Once the system registry information is setup, the user can have a standard security level.

System Requirements

Operating System: Windows NT, 2000, XP

Memory: 2 Megabytes of memory

System: Minimum Windows Requirement